

LLWCYL-3D LLWCYL-3UD

3" Wall Mount Cylinder. Available in Down or Up/Down Versions

Construction: Powder Coated Aluminum
Finishes: White (WH), Black (BLK) and Silver (SLV)

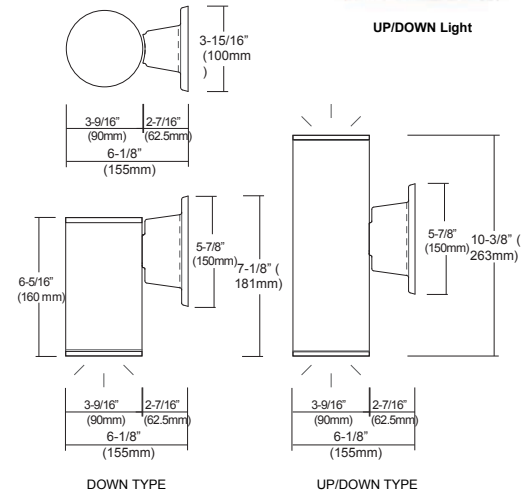
Light Source:

- 13W:** 120V/13W/1, 160lm Beam Angle 39°
- 17W:** 120~277V/17W/1, 375lm Beam Angle 62°
- Up/Down is Double Wattage/Lumens
- Available in 80 or 90 CRI
- Select from 30K, 35K or 40K
- TRIAC/ELV: 120V
- 010V: 120/277V (13W with 120V Only)
- EM: Battery Backup: 9W/800lms (approx.), 90 minutes after full charge.
- Optional Photo Cell is available for Dusk to Dawn operation.

Mounting: Mount completely assembled fixture directly on the wall surface using appropriate anchor bolts or screws (supplied by others).

Notes/Certifications/Warranty:

- Operating Temperature -22° F to 104° F (-30°C to 40°C).
- Buy American Act Compliant
- cCSA-us Listed for Wet Locations
- IP65 Rated.
- 3 Year Limited Warranty on LED and Housing



Ordering Information:

PART #	WATTS	COLOR TEMP.	CRI	DIMMERS	FINISH	OPTIONS
LLWCYL-3D	13W 17W	30K 35K 40K	8 9	TRIAC/ELV: 120V 010V: 120/277V (13W with 120V Only)	WH BLK SLV	P- Photocell (For Outdoor Use Only) EM- Emergency Driver
LLWCYL-3UD	13Wx2 17Wx2					

As of 11/2023 the 010v dimming module has been upgraded to work with all 010V dimming systems, including Electronic Relay Dimming Systems

OPTIONS



P: Photocell for Dusk to Dawn Operation (Outdoor Use Only)

Approved Dimmers

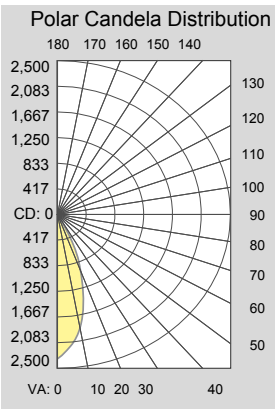
- * Lutron: Skylark S-600
- : MRF2-6DN-120
- : MACL-153M
- : DVLV-600P
- : SELV-300P
- : CTCL-153P
- : DVELV-303P
- : DVCL-153P
- * Leviton: D600R, Acenti: Ate06,
- Trimatron #705W*Cooper Devine incandescent dimmer 600W
- * Pass&seymour harmony incandescent 600W For 0-10V Driver
- *** Lutron: Nova 0-10V : NTFTV
- : Diva 0-10V : DVTV
- * Leviton: Decora 0-10V : IP710DL

*Consult tech. service or factory for additional dimmers
**Consult with factory if you are not using the approved dimmers

**** WARNING: DO NOT USE 0-10V Electronic Relay Systems like Acuity nPP16 EFP or Creston GLXP-DIMFLV8-LP units with Lum-Tech DoB fixtures.
DO NOT Combine other types of fixtures on the same 0-10V dimmer/module, especially on WATTSTOPPER device.**

PHOTOMETRIC REPORT

* Contact Factory for IES File

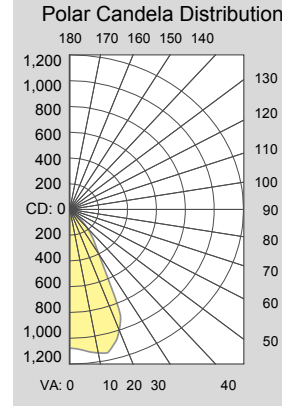


LLWCYL-3D-13W

Illuminance at a Distance

	Center Beam FC	Beam Width
2.0ft	590.4 fc	1.4 ft
4.0ft	147.6 fc	2.7 ft
6.0ft	65.6 fc	4.1 ft
8.0ft	36.9 fc	5.4 ft
10.0ft	23.6 fc	6.8 ft
12.0ft	16.4 fc	8.2 ft

Beam Spread: 39



LLWCYL-3UD-17W

Illuminance at a Distance

	Center Beam FC	Beam Width
2.0ft	268.4 fc	2.4 ft
4.0ft	67.1 fc	4.8 ft
6.0ft	29.8 fc	7.2 ft
8.0ft	16.8 fc	9.6 ft
10.0ft	10.7 fc	12.0 ft
12.0ft	7.5 fc	14.4 ft

Beam Spread: 62